

Need a new water heater?

St. Croix Electric Cooperative has been utilizing electric water heaters in its load control program since June 1982. By controlling when water heaters are allowed to charge (warm-up the water in the tank), SCEC and Dairyland Power Cooperative - our wholesale power provider - can realize near-term savings by reducing the need to purchase electricity when demand is high and market prices for power are at their peak.

SCEC Member Pricing

New Home: \$399

(New occupied dwelling)

Existing Home: \$399

(Occupied dwelling, conversion from gas/propane)

Existing Home: \$625

(Occupied dwelling, electric WH replacement)

Non-Member Pricing

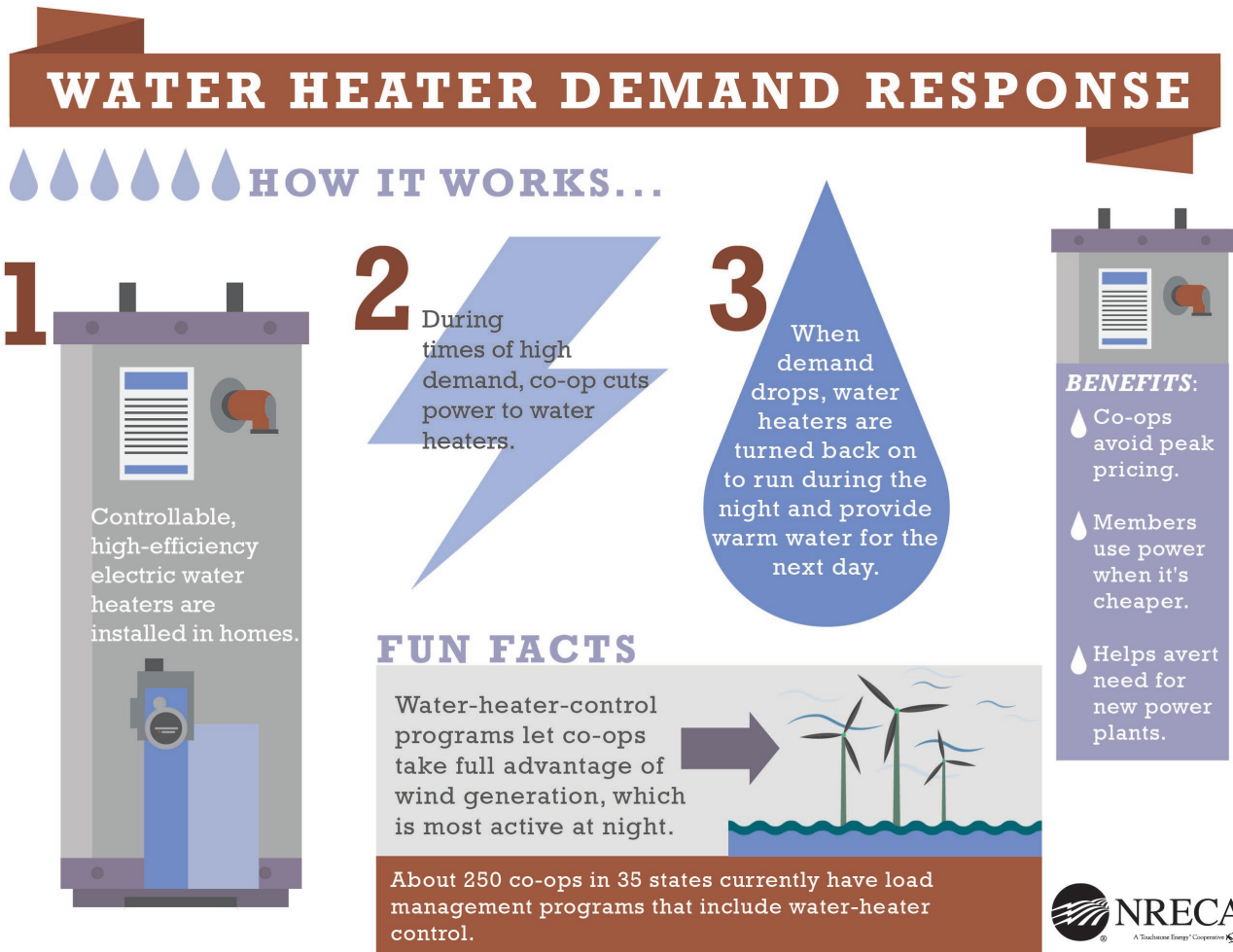
Retail: \$1,058 + WI sales tax (5.5%)

(Replacement elements, parts at cost)

What is Load Control?

The Westinghouse model sold by SCEC is an 80-gallon water heater. During times when electricity is in high demand (and most expensive), DPC can remotely switch off the warming element in controlled water heaters. The household can still utilize water during a control period (four to six hours) by drawing from the warmed water in the water heater tank. Once the control period is over, the water heater will resume normal

function. By heating water when demand for electricity is low and storing the thermal energy for later use, electric water heaters can save you - and your cooperative - money. Your in-home water heater is part of a large-scale community storage initiative to help increase energy efficiency, better integrate renewable energy resources onto the grid and reduce members' monthly electric bills.



For more information, call or visit the office (7:30 a.m. - 4:30 p.m., Monday - Friday | 715-796-7000).



Westinghouse Stainless Steel Commercial Water Heater, 80 Gallons


St. Croix Electric Cooperative offers discounts to members on a new Westinghouse 80-gallon water heater. Pricing can be found inside the brochure. The water heater program includes:

- 98% thermal efficiency water heater
- Lifetime tank warranty
- Rigid polyurethane foam insulation
- Free delivery
- - Member/Customer must hire a qualified plumber to install the water heater
- Free replacement parts (SCEC members, only)
- Must be on SCEC's Load Control Program (SCEC members, only), which may qualify member for a lower electric rate. Or, members may choose to receive a \$3/month bill credit for participation!



Brought to you by:



A Touchstone Energy® Cooperative 

1925 Ridgeway St. | Hammond, WI 54015

www.sccenet.net | 715-796-7000

St. Croix Electric Cooperative is an equal opportunity provider.

Water Heater Program



A Touchstone Energy® Cooperative 